



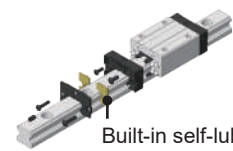
*Specialized in Linear Motion*



# Ball Linear Guide BR Series



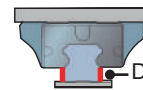
**Maximum Relubrication Interval**



Built-in self-lubrication  
( Standard Type )



**High Installation Flexibility**



Dual reference of rails



**Cost-effective Inventory**









One rail for all blocks

## Specification

Size	15, 20, 25, 30, 35, 45
Rail type	Standard, Blind holes
Precision	Up to 9 $\mu\text{m}$ / 1000 mm
Operating temperature	-20 ~ +80°C

## Block type

Type						
Block	Flanged	Flanged	Slim-line	Slim-line	Slim-line	Slim-line
Length	Standard	Extended	Standard	Extended	Standard	Short
Height	Standard	Standard	Extended	Extended	Standard	Standard

ABBA  
BMHS 9 380 U  
001

# Miniature Linear Guide BM Series



**Innovative Anti-drop Design**



Robust ball retention system



**Up to 20,000 km Maintenance-free**



Lubricant reservoir



**Excellent Installation Flexibility**



Zero rail concept

## ► Specification

Size	7, 9, 12, 15
Rail type	Standard, Wide
Speed	5 m/s
Acceleration	Up to 140 m/s <sup>2</sup>
Precision	up to 7 μm / 1000 mm
Operating temperature	-20° to +80 °C (+100 °C without seal)

## ► Block type

Type								
Block	Standard	Standard	Standard	Standard	Wide	Wide	Wide	Wide
Length	Standard	Standard	Extended	Extended	Standard	Standard	Extended	Extended
Sealing	Low friction shield	Front seal	Low friction shield	Front seal	Low friction shield	Front seal	Low friction shield	Front seal



# Ball Screw Rolled Series



**High DN Value**



Up to 130,000



**High Rigidity**



Surface hardening treatment



**Low Noise**



Special design of steel ball reflux device

## Specification

Size	6, 8, 10, 12, 14, 15, 16, 20, 25, 32, 40, 50, 63, 80
Grade	C5, C7
DN	50,000 ~ 130,000
Lead	1~50

## Nut type

Type									
Flange	Yes	Yes	Yes	Yes	Yes	Yes	No	No	No
Nut	Single	Double	Single	Double	Single	Single	Single	Single	Single
Circulation	EU regulations (DIN69051)		Inner loop		High lead	Low noise	Miniature	Cylindrical keyway	Convex tube outer circulation

# Diverse Applications



Automotive



Electronics



Food and Beverage



Machine Tool



Materials Handling



Laboratory Automation



Packaging and Labeling



Semiconductor Machinery



Robotics



Printing



Medical

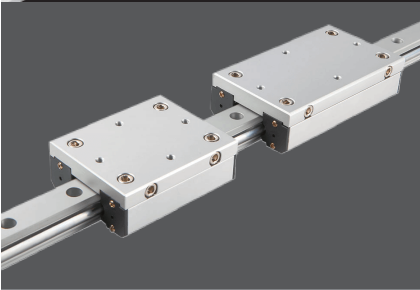


Laser Cutting



## Ball-caged Linear Guide BC Series

Lower Noise and Smoother Running



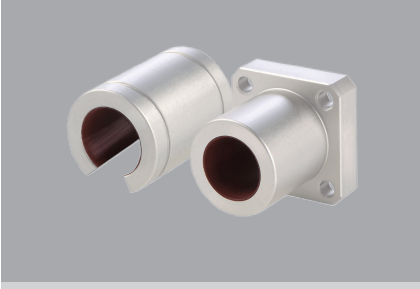
## Cam Roller Linear Guide

Adjustable Roller Clearance on Block



## Round Shaft Linear Guide

SUJ2 Shaft with Hard Chromium Coating



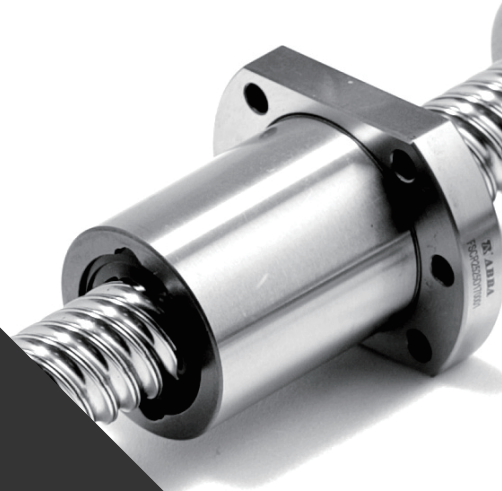
## Self-lubricated Linear Bearing

Chemical and Corrosion Resistance



## Support Unit of Ball Screw

Available for Floated / Fixed Side



## ABBA Linear Tech Co., Ltd. Abbalinear.com

Phone : +886 3 4988326      Email : abba@ewellix.com

Address : No.123, Sec.1, Yuemei Rd., Zhongli Dist., Taoyuan City 32053, Taiwan ( R.O.C )